



# STREAM BOX S2

## Compact Multiroom Streamer

MSRP: 299€ (incl. VAT)

- Supports up to 24bit/192kHz
- Spotify, TIDAL and more
- TuneIn, iHeartRadio internet radios
- UPnP, DLNA support
- Highly flexible Multiroom support
- Stereo pairing
- ESS9023 DAC
- WAV, ALAC, FLAC, MP3, APE, AAC
- Line Input
- Fixed, variable analogue & optical outputs
- WiFi 802.11 b/g/n
- Solid metal casing protects from interferences
- Free control App „Pro-Ject Stream S2“ (iOS/Android)

Colour options:

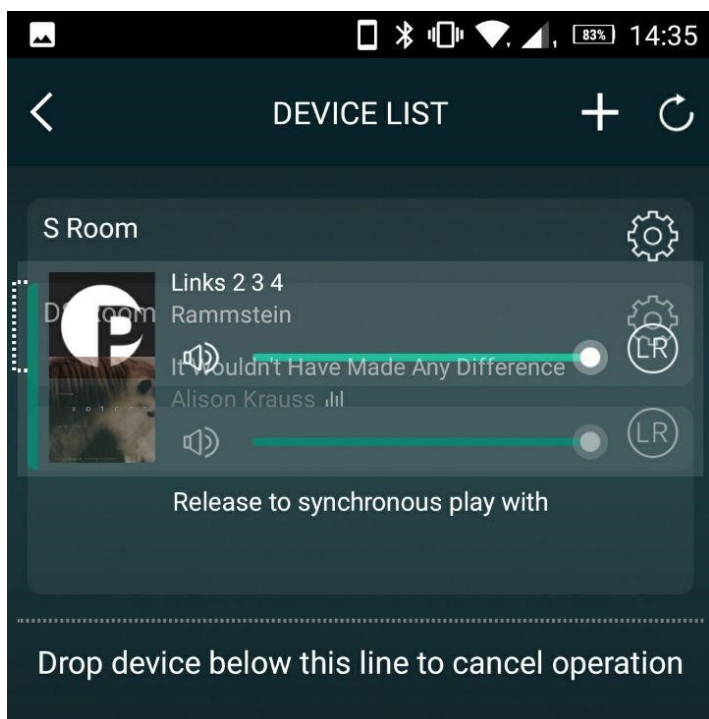


<b>Audio Formats</b>	MP3, FLAC, WAV, ALAC, APE, AAC Up to 24bit/192kHz
<b>Internet Radio</b>	TuneIn, iHeartRadio
<b>Streaming Services</b>	TIDAL, Spotify and more
<b>Supported data protocols</b>	UPnP, DLNA
<b>Multiroom</b>	up to 10/6 devices (Ethernet/WiFi)
<b>Inputs</b>	1 x USB A, Network (Ethernet, WiFi), 1 x 3.5 mm (Line In)
<b>Outputs</b>	1 x RCA (fixed) 1 x 3.5 mm (variable) 1 x optical (S/PDIF)
<b>Controllable via</b>	App („Pro-Ject Stream S2“)
<b>Weight</b>	355 g (without power supply)
<b>Dimensions</b>	103 x 37 x 122 mm (WxHxD)

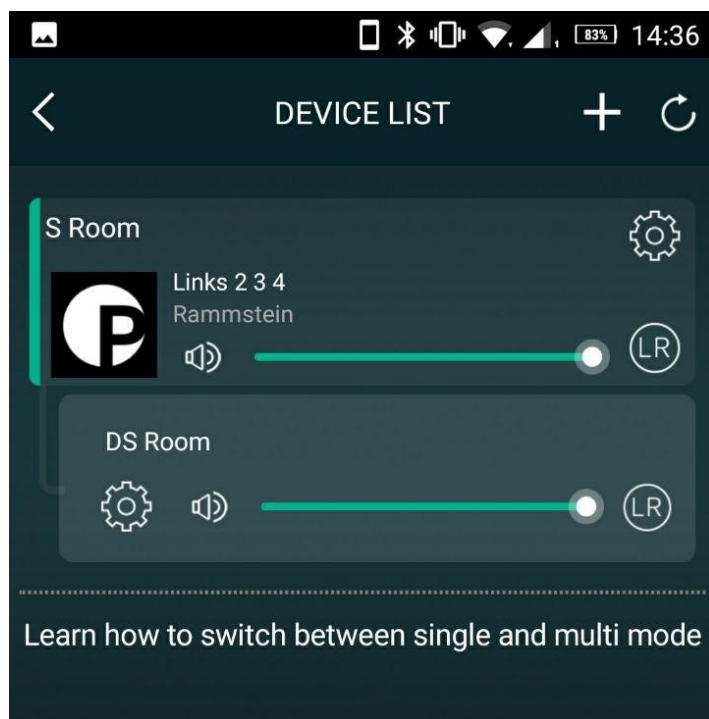
### Stream Box S2: tiny, compact and advanced.

Today's market is getting overcrowded with lots of wireless streamers. Most of them are only focused on a good App, but the real sound quality is determined by the quality of the DAC and the analogue audio output stage. Also, from an esthetical viewpoint, many of the streamers are just plastic boxes and no amp or other components are in it. In recent times Pro-Ject has been producing the some of the best micro high-end amps on the market, like the Maia S2 or the Stereo Box S2.

For these products we developed a fitting streamer, which matches the sound quality and aesthetics of these amplifiers. It is very easy to use per App and has all features of modern-day streamers, including proper multiroom functionality! It offers support for high resolution data up to 24bit / 192kHz, as well as the possibility to connect to multiple Stream Box S2 Multi to form a multiroom setup. The multiroom stream quality remains on CD quality (16 Bit/ 44.1 kHz) which, for multiroom applications, is an enormous amount of data and great audio quality. The possible zones are limited to 10 or 6 zones (Ethernet or WiFi) to ensure a flawless transmission considering the high data rates. Usually multiroom devices which offer a high number of zones are data reduced to max. MP3 quality to ensure a flawless stream. Moreover, two units can also be connected to build a stereo pair (with assigned left and right channel).



Drag & drop Single Stream Box S2's



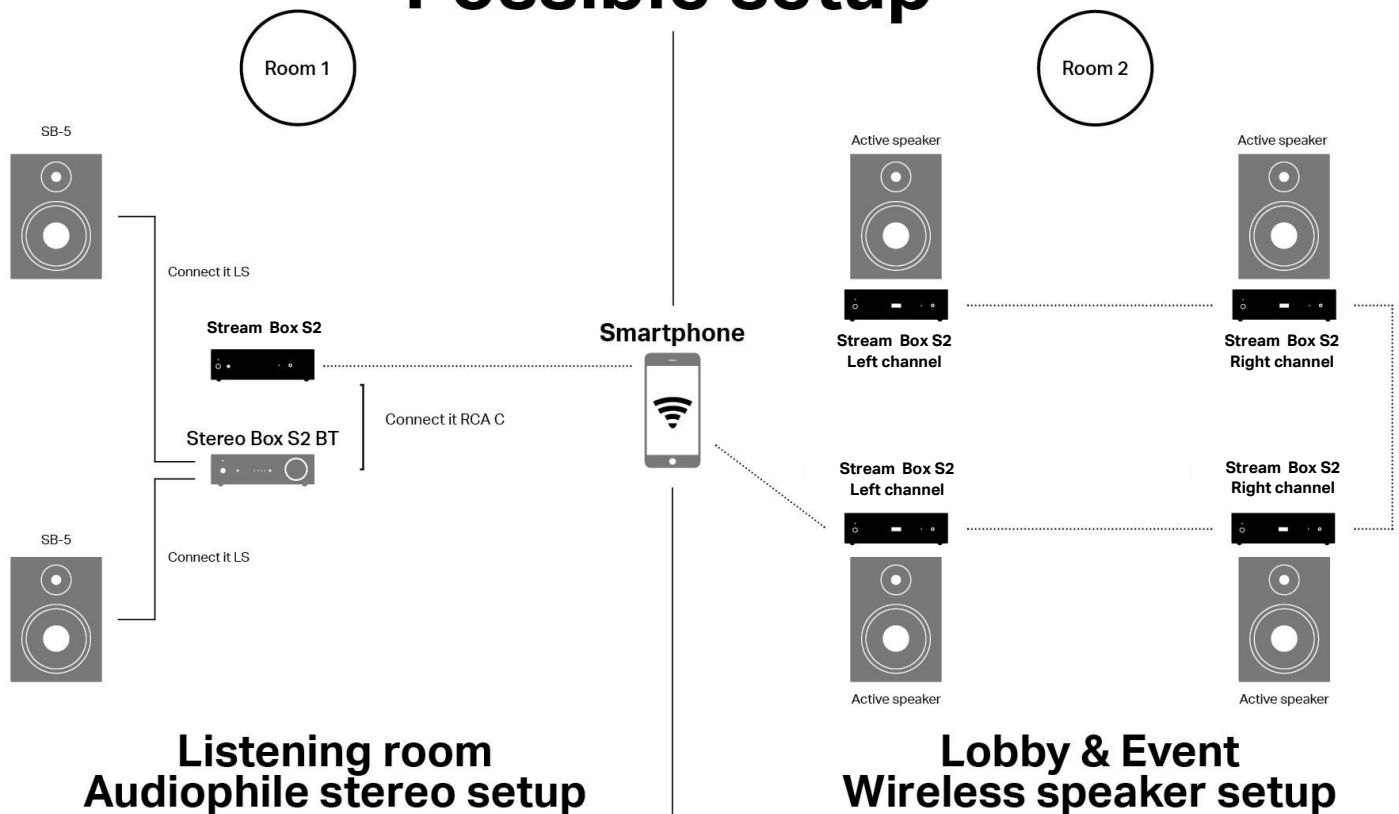
Paired Multiroom Stream Box S2's

Multiroom In-App Configuration: Drag & drop Stream Boxes on top of each other to pair them and play the same music in different rooms simultaneously! Bonus Features: control volume levels shared or individually and configure left and right channel assignments.



If you have active speakers you can create wireless speakers, by placing the Stream Box S2 right next to them. You can then freely place the speakers in your room and do not need to worry about long cable lines anymore. This allows you for greater flexibility, when you want to set up a bigger lobby or event room with great sounding background music.

## Possible setup



Three different outputs guarantee a flexible solution for every audio chain. A line level RCA output can be connected to a pre-amplifier for purest signal, a dedicated variable output can be connected to active speakers or power amplifiers. The optical output can further pass a digital signal to an external DAC. The Stream Box S2 comes fully equipped with TIDAL and Spotify. With the implementation of Shairport we were even able to give iDevice users out there another possibility to send data to the Stream Box S2. Friends of internet radio will find satisfaction in TuneIn.

